

Tesla's - A Gift For Mankind



In Search Of Harmony

In our chaotic world people are constantly searching for a safe haven where they can find peace even if it is for short period each day. But often the atmosphere they try to create eludes them. They attempt to create this space in their own home surrounding themselves with all the latest electrical technology and modern conveniences. This is extended to their computer driven cars with all the creature comforts.



Many people are strongly aware that something is not quite right they can feel it but they can never put there finger on it. They know it is affecting their health and thought patterns.

There was a interesting study done by The Dulwich Health Society (UK), where they were investigating a thing called Geopathic Stress.

This is a term derived from GEO the earth and PATHOGENIC to create illness. Many people are not familiar with this term or its relation to their everyday living.

GEOPATHIC STRESS CAN BE FROM ABOVE OR BELOW GROUND.



Above ground: electromagnetic frequencies from radar, satellites, mobile phone towers, electrical transformers, microwaves, radio frequencies transmissions etc.

Below ground stress; dry faults or ley lines (earth energy lines). Underground water (subterranean streams or rivers).

The earth has many subterranean streams and rivers which may often be found under houses when they are dowsed. These streams may have similar effects to ley lines. The water may carry E.M.F.s (electromagnetic frequencies) that flow into the earth via our AC power sources. A person, who is adversely affected by these negative earth energies and E.M.F.s may also suffer from Geopathic stress.



Australia has one of the highest occurrences of under-ground water veins on earth.

For example, high-voltage power lines were constructed near Wangaratta, Victoria over an area which contained underground water. After the construction was finished, there was a dramatic increase of 25% in leukemia and other cancers.

William Buehler found that humans and animals are sensitive to the earth's magnetic field and are also affected when in proximity to these energetic grids. Any structures that this energy passes through will be affected too such as underground streams and minerals and so forth. If we stand in one of these areas of high energy, we will be affected both physically and psychically, in particular where two or more lines cross and the energies seem to be amplified.



It seems that events in the area can also be picked up and retained within this energy current, for instance in battle sites, many seem to be able to pick up on really strong emotional energies almost like they are stored there. Some even say that certain areas on these energy grids can actually make us ill and they call this an area of geopathic stress.

Geopathic stress has been found to be one of the most common factors in serious and long-term illnesses and some psychological conditions.

The Dulwich Health Society found after studying 25,000 people who lived or worked in a Geopathic Stressed area, these interesting statistics:

- 100% of people who get secondary cancer.
- 95% of people who get cancer.
- 95% of children with hyperactivity etc.
- 95% of people who develop AIDS.
- 80% of parents/caregivers who abuse children.
- 80% of people who get divorced.
- 80% of couples unable to have babies.
- 80% of women who have a miscarriage.
- 80% of babies who died of Cot Death.
- 70% of M.E. (Post Viral Fatigue) sufferers.
- 70% of people who are allergic to food or drink

Geopathic Stress Is Not New

We have encircled the earth and infused the earth's atmosphere with these non-ionizing electromagnetic fields - frequencies in ways that don't exist in nature. We use unnatural strengths, Alternating Current, digital signals, all sorts of odd frequencies, without any understanding of the full biological effects on both the earth and its inhabitants. In reality everyone is affected by EMFs. In fact there are few if any other factors currently as adverse to the 'ease' of the human body.

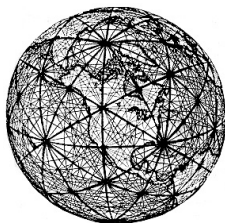
History of Ley Lines



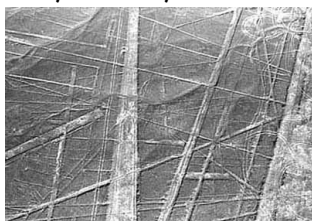
Even though the term 'Ley-line' was originally conceived by Alfred 'Watkins' to describe these straight lines, by 1929, he had discarded the use of the name 'ley' and referred to his alignments only as 'old straight tracks' or 'archaic tracks'

Most cultures have traditions and words to describe the straight, often geometric alignments that ran across ancient landscapes, connecting both natural and sacred prehistoric structures together. Usually the names given to represent these invisible lines are translated to an equivalent of 'spirit', 'dream', or 'energy' paths. However, apart from the physical presence of the sites themselves, proving the presence of a 'connection' between them is something that researchers have found notoriously elusive.

The same observation was made in other parts of Europe by the Romans themselves, who in their conquest of the Etruscans, noted standing stones set in linear patterns over the entire countryside of Tuscany. The Romans built their roads on top of these old straight roads in the belief it would charge their soldiers as they marched along them for battle. That is where the term "All Roads Lead To Rome" come from.



Romans also record discovering these 'straight tracks' in almost every country they subjugated: across Europe, North Africa, Crete, and the regions of ancient Babylon and Nineveh. Fairly conclusive then - the roads existed before the Romans. In fact, considering the scale of development in the Neolithic period approx 5,000 - 3,000 B.C. it is quite likely that they (or the first, or some at least), existed at that



time too, if only to connect sites.

Exactly how old the original straight paths were is a matter of debate. We can read of

ley-lines connecting offshore beneath the English channel upon which basis, Behrand concluded that these particular leys must have been marked out between 7,000 BC and 6,000 BC

The Australian Connection

The Aborigines of Australia tell of a 'past-age', which they call the 'dream-time', when the 'creative gods' traversed the country and reshaped the land to conform with important paths called 'turingas'.



They say that at certain times of the year these 'turingas' are revitalised by energies flowing through them fertilizing the adjacent countryside. They also say that these lines can be used to receive messages over great distances.

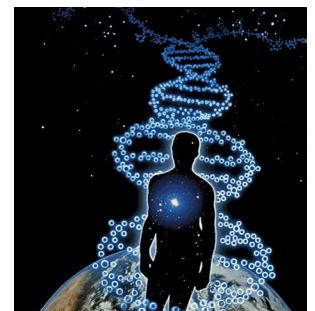
The history is there for anyone who wishes to research it, and there is no doubt that Geopathic stress can impact our lives. The only thing is that we have made it a lot worse with our modern technology.

Various doctors in Europe who between them have investigated over 10,000 cancer patients found 92% were living in a GEOPATHIC stress environment.

Dr. E. Harman MD. in 30 years of practice, has not yet come across a seriously ill person (with the exception of disease caused by virus, bacteria, or infected injuries) who has not slept or stayed for long periods in a GEOPATHIC stressed environment.

The Human Super Computer

Many people have trouble understanding why we are effected so much by Geopathic Stress. Our bodies are an amazing thing, made up of over 100 trillion cells. Each cell is capable of holding 6 gigahertz of information. A gigahertz is a frequency measurement of One Billion (1,000,000,000) hertz. When you do the maths of multiplying 100 trillion cells by 6 gigahertz capacity cells you end up with a number that is greater than all the computers on the planet.



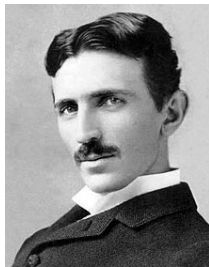
To help put this into some form of comprehension you can fit 10,000 cells on the end of a pin. These cells are very sensitive to energy. Dr. Bruce Lipton found that our genetic make up can be influenced by external mechanisms, which he calls Epigenetic's. His research is defiantly worth studying as it explains a lot of things about life.

Nikola Tesla

But the most important thing from his studies is the explanation of the membrane of the cell and the receptor sites on the outside of the cell and the effector sites on the inside of the cell. The human cell can have up to 100,000 of these receptor and 100,000 effector sites. These are like antennas tuned to receive different frequencies. Geopathic Stress scrambles the frequencies and affects the cells to function at full capacity at often causing the wrong message to be sent to the DNA.

Nikola Tesla

Nikola Tesla was born in 1856, on the Old Austrian-Hungarian border, the son of a Croatian preacher. He had a great interest in the way the earth produced energy and its grid lines. He migrated to America in 1884, with 4 cents in his pocket & a vision in his head. After working for Thomas Edison for two months, Tesla had a clash of ethics with Edison & left his employ, choosing to dig ditches.



After hearing Tesla talk, George Westinghouse asked Tesla to become his partner & produce Tesla's dream of alternating current. Tesla & Westinghouse became friends and business partners (Tesla inventing and building while Westinghouse provided the capital). Over the next 59 years Tesla became the most prolific & remarkable discoverer/inventor of all time.

Tesla was the owner of 1,600 patents and is the only man to hold several patents in sequential order. Between the years 1870 to 1925 he received 27 different honorary degrees from universities all over the world. Tesla understood how light & pyramid energy worked.

AC Current

Tesla's first & greatest invention was that of the rotating magnetic field, the fundamental element of alternating current (AC), the electricity we use today.

Tesla & Westinghouse designed & built the world's first hydroelectric power station at Niagara Falls in 1885, & sent power 56km (34miles) to Buffalo. This was a first because until then Edison's electric company could only produce direct current (DC), & had only been able to send DC power 1 or 2 street blocks before it would run out of strength. Westinghouse & Tesla agreed they did not want to make money from their production



of electricity. They would only charge a small amount for the use of electricity, (Tesla invented a meter to measure usage) just enough to cover building & ongoing repairs; it was to be their gift to humanity.

Three large banks saw a great financial future in this new AC power & approached Westinghouse with a large offer. Westinghouse refused the offer so the banks bought up his shares without his knowledge & at the annual general meeting informed George Westinghouse he no longer owned his company & was not wanted.

The bankers then offered Nikola Tesla \$3.5 million for all his patents & knowledge; Tesla refused the money & paid dearly for that decision, his laboratories were burnt to the ground. After the fires one of the bankers J. P Morgan took over the financing of Tesla's work.

Tesla's Warning

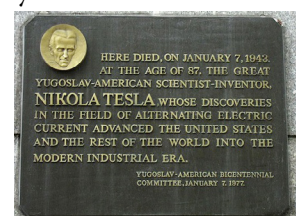
By late 1886 Tesla realised the **AC electricity he invented would prove to be one of the most dangerous things on Earth to the health of all living things.** This was because he realised the effect it would have on human cells due to its chaotic nature. He also realised that the effects of AC electricity combined with earth energies would prove to create a lot of illness.

In 1912 Tesla produced what he called 'free energy' at his Boulder Colorado laboratory. He demonstrated this to the media by lighting 200 light bulbs 51km (31miles) away by just screwing the light bulbs into the ground. This electricity would not only be free but safe as it was harmonious with our bodies. One of the 3 bankers (J P Morgan), set about destroying Tesla & his name.

Could you imagine not having to pay for the power you use & not polluting our atmosphere?

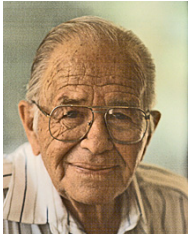
Several months before his death, Tesla handed Ralph Bergstressor, a young physicist in the Air force, his paperwork on how to counteract the biological effects of his inventions.

Nikola Tesla died in 1943 in unusual circumstances. Although most books will tell you he died in his sleep, friends & family claim he was run over by a black limo as he crossed the road to feed his pigeons, then placed back in his hotel room. This happened 2 days before he was to meet with the President of the United States to explain the damage that his inventions would cause, including the Philadelphia experiment.



The Solution

Ralf Bergsstressor Connection



By the 1970's Ralf developed the first generation of plates to counteract the effects of EMR (Electromagnetic Radiation) and EMF (Electromagnetic Fields) These were the purple plates made from aluminium.

Unfortunately these products were unable to raise vibrations past 7.9Hz The planet's vibration in May 2005 was 16Hz. & in March 2007 18.8Hz

Tesla's Today

In The nineties two physicists took Teslas original work given to Ralph and developed it further so that the metal used to be transformed would accommodate for the changing vibration of the planet.

Titanium was chosen to be the carrier metal, because it's a pure element. The device used with Tesla's products alters the atom structure within metal causing the metal to act as a transceiver in the same manner as the Pyramids.

The Pyramids were given to humankind after the demise of Atlantis to help bring 'light' back to the planet and teach humankind our place as 'Light Beings'

Interestingly enough when an eastern block country took an energy photo inside the Great Pyramid it showed human DNA (32 strands) going through the centre of the Pyramid

The Pyramids are antennas bringing in Photon energy. When they were built their purpose was to disperse this light energy into the Planet, but over time with the shifting of the magnetic poles, plus human interference altered the effectiveness and strength of the Pyramids' functioning.

Tesla's Innovational Technologies' products act in the same way as the Pyramids were originally designed to function (antennas bringing Photon light energy in) but unlike Pyramids, Tesla's products do not have a negative area.

The Solution

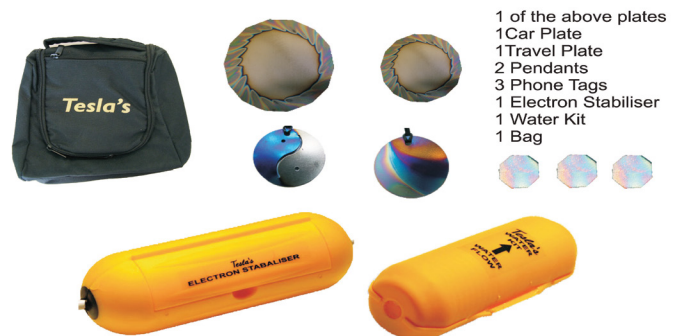
In today's world we are surrounded and bombarded with all types of energy. It is amazing that we withstand the onslaught of our cells from High tension power lines, Wireless transmissions, Microwaves, Phone towers, Electro Magnetic frequencies combined with the earth energies in different places.

After much research and development there is an answer to our polluted EMF atmosphere

Tesla' have designed a number of different technologies to counter the effects of each of these energies using its proprietary technology. 1000's of people today now use this technology and feel what it is like to live with out the bombarded of these energies in their lives. Many people who could no longer go to shopping centers because of the high levels of Geopathic Stress can now shop again with out being affected and are very thankful.

The House Kit

To assist people cover their house, car, phones, water and bodies, Tesla's products help you to enjoy the atmosphere your body craves for. This is a once only lifetime purchase. It will last you the rest of your life. It is transportable, when you move house you easily take it with you.



The HOUSE KIT consists of:

- 3 Phone Tags - alters biological effects coming from mobile or cordless phone transmissions.
- 2 Personal Pendant - strengthens the auric field, thus helping to alleviate the bio-energy effects of some man-made EMF/EMR.
- Pocket Plate - helps with minor pains or bruises & can be used to alter the taste of water.
- Car Plate — helps alter the aggressive fields coming from the electronics in cars.
- House Plate - helps households cope with Geopathic Stress, EM Radiation & air ionisation.
- The Stabiliser - fits on to a power cord and turns the chaotic frequencies in the wiring to coherent.
- The Water Kit - puts life force into tap water, tastes & feels like rain water (no ongoing costs.)

To order contact:

Golden Pathways To Harmony

www.gpth.com.au

Ph: 07 5494 2155 Mobile: 0409 055 816

Email: info@gpth.com.au